



Northumberland
County Council



Energising Blyth - Town Council 22.5.24

www.northumberland.gov.uk

Contents



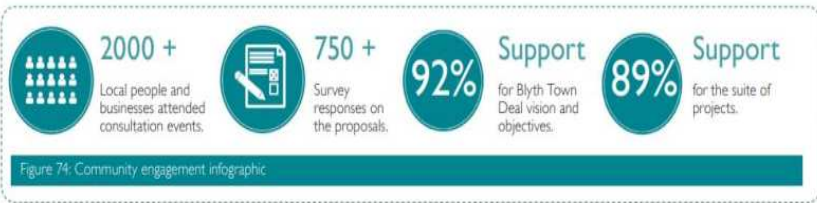
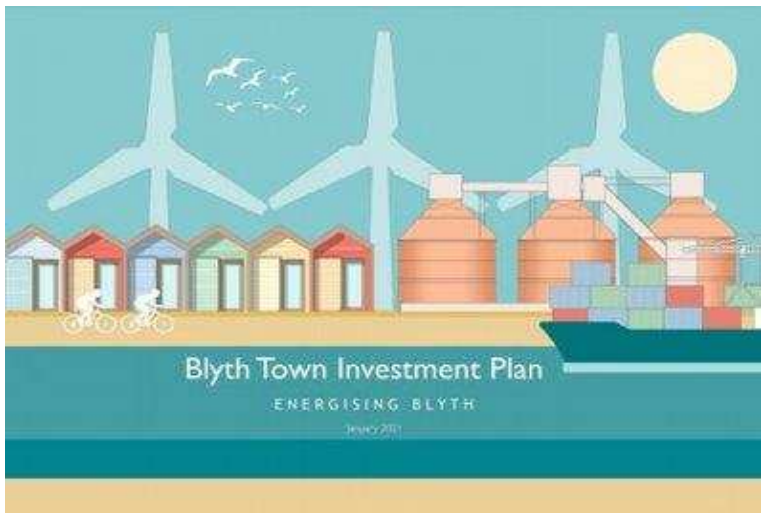
1. Current Programme Recap



2. Introduction to Long Term Plan for Towns



3. Q&A / INPUT



1. Current focus of the Town Investment Plan

Energising Blyth is a regeneration programme to grow, renew and connect the Blyth, the largest town in Northumberland, it is based on a Town Investment Plan agreed locally by partners with UK Government.

The £90m Regeneration Programme to transform Blyth is funded by UK Government including Future High Streets Fund, Town Deal and Levelling Up Deep Dive, Northumberland County Council, North of Tyne Combined Authority and other partners alongside a wider programme of investment including the Northumberland Line, Blyth Relief Road, Northumberland Energy Park and Heart of Blyth. A further £20m has been announced as part of the 'Long Term Plan for Towns' announced by UK Government in Sept 2023.

From 2021 to 2027 the Energising Blyth Programme includes 13 major projects which will help to deliver a:

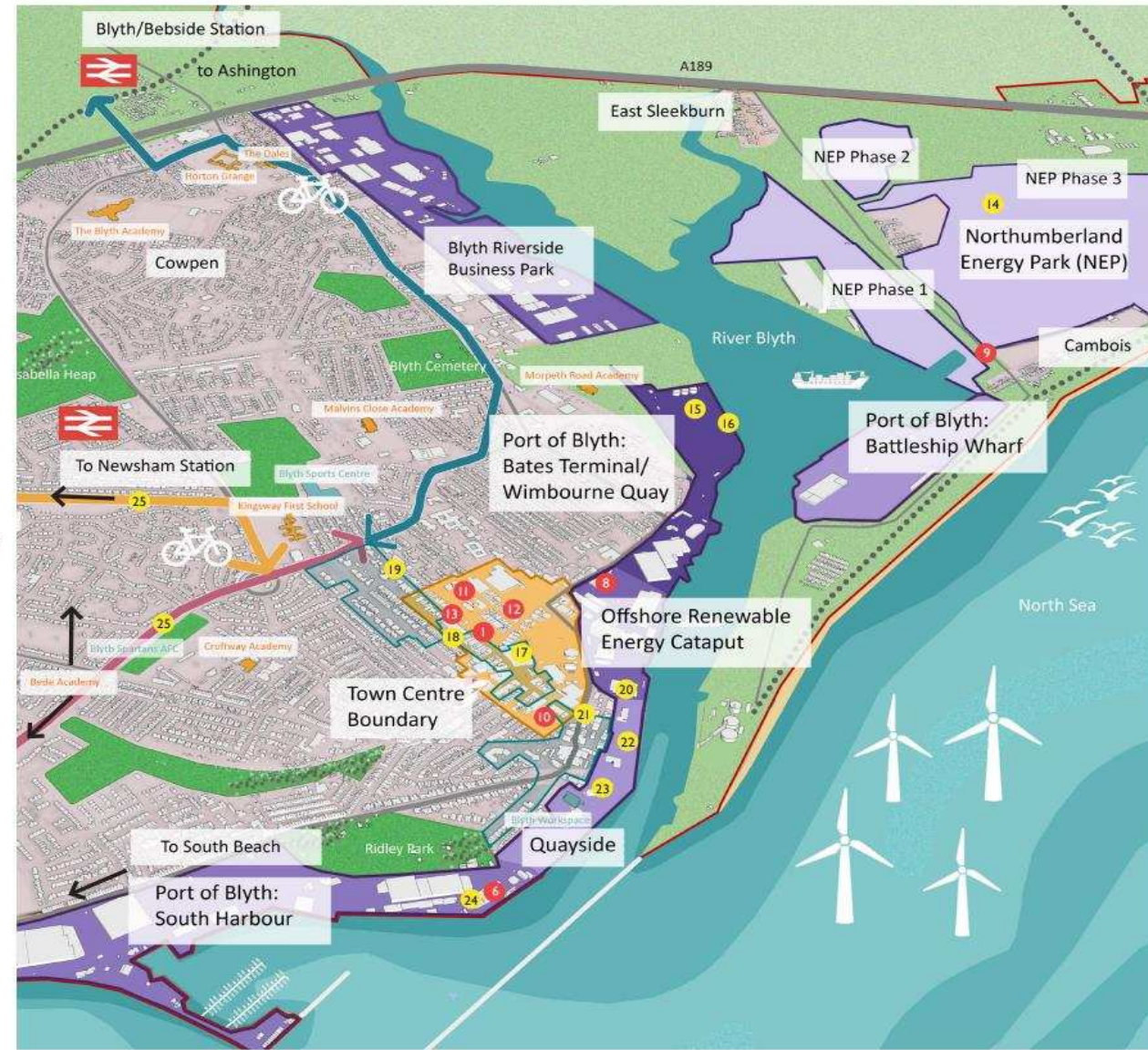
- **Vibrant Town:** Renew the town centre with new cultural, education, leisure and residential projects around a revitalised Market Place.
- **Growing Town:** Boost the growth of Blyth's major renewable energy industry at the Quayside, Port of Blyth and industrial sites.
- **Inclusive Town:** Provide skills, culture and leisure activities for the benefit of local people, communities and businesses.
- **Connected Town:** Improve walking and cycling routes and connections to public transport networks, making it easier to travel into / out of Blyth.
- **Clean Growth Town:** All the above supported by being a leading place for delivering net zero and a just transition.

Town Investment Plan

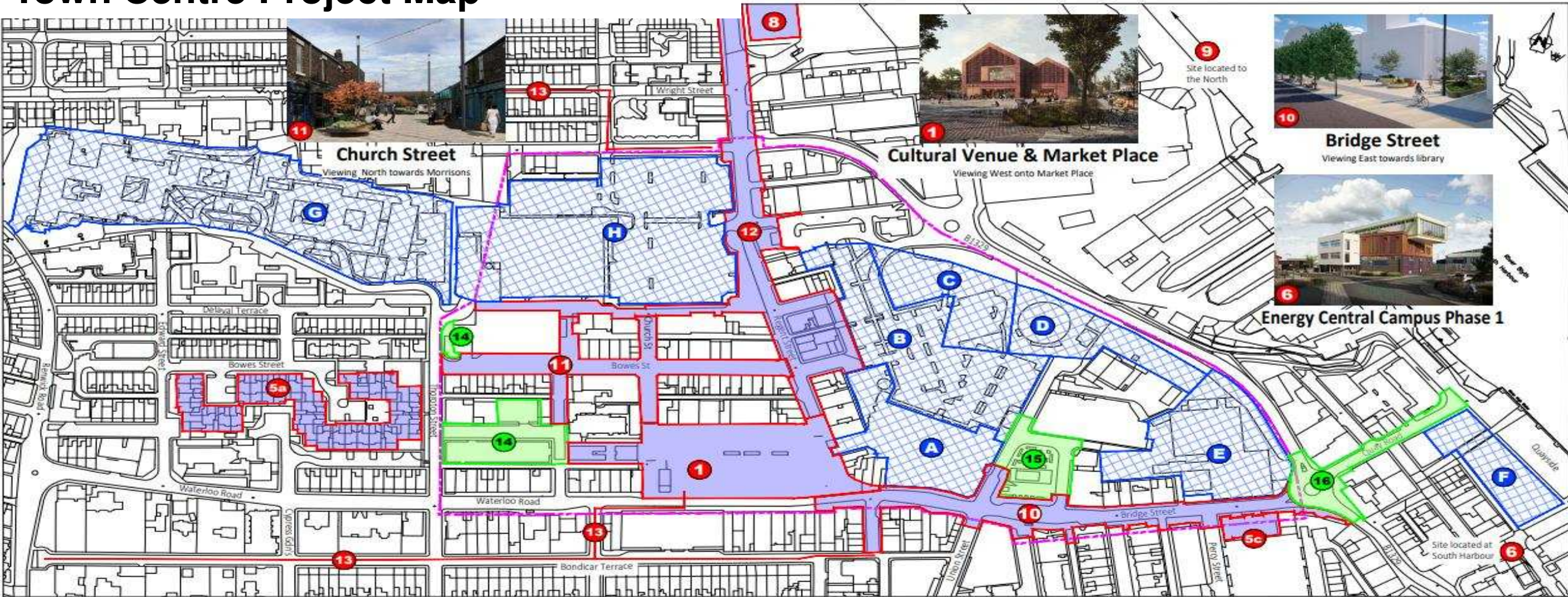
Town Wide Projects Map

- Location of Projects Diagram Key**
- Blyth Town Deal Boundary
 - Blyth Town Centre
 - Energy Central - Blyth Estuary Sites
 - Cycling and Walking Corridors
 - Northumberland Line Railway
 - Location of Proposed Northumberland Line Railway Stations
 - Conservation Areas
- Energising Blyth Projects**
- 1 Culture Hub and Market Place
 - 2 Culture and Placemaking Programme (across town)
 - 3 Hotel and Restaurant Town Centre Location TBC
 - 4 Welcoming and Safe Blyth (across town)
 - 5 Housing Renewal and Town Centre Living (locations TBC)
 - 6 Energy Central Campus (ECC) Phase 1 (Learning Hub)
 - 7 ECC Phase 2 (Institute) Town Centre Location TBC
 - 8 Offshore Renewable Energy Catapult (OREC) Technology Innovation Centre (TIC)
 - 9 Northumberland Energy Park Infrastructure
 - 10 Bridge Street Improvements (The Link)
 - 11 Bowes St, Church St and Wanley St improvements (Northern Gateway Phase 1)
 - 12 Regent Street Improvements (Northern Gateway Phase 2)
 - 13 Beside to Town Centre Cycling and Walking Corridor
- Other Projects**
- 14 Northumberland Energy Park
 - 15 Blyth Clean Energy Terminal
 - 16 Minewater District Heating Network (locations TBC)
 - 17 Blyth Bus Station
 - 18 High Street Car Park and Thoroton Street Improvements
 - 19 Headway Artspace
 - 20 Commissioners Building - Maritime and Heritage Museum
 - 21 Quay Road and Roundabout Improvements
 - 22 Dun Cow Quay
 - 23 Commissioners Quay Development
 - 24 Blyth Welding and Fabrication Centre
 - 25 Cycling and Walking Priority Corridors (routes TBC)
 - 26 Blyth Relief Road (preferred route TBC)
 - 27 Moor Farm Roundabout: Located south of Blyth at A189/A19 junction

Energising Blyth Project Map



Town Centre Project Map



Energising Blyth Projects

- | | | |
|--|--|---|
| 1 Cultural Venue and Market Place | 5 Housing Renewal and Town Centre Living | 6 Energy Central Campus (ECC) Phase 1 (Learning Hub) |
| 2 Culture and Placemaking Programme (across town) | 5a Bowes Court Energy Efficiency Improvements | 7 ECC2 Phase 2 (institute) Town Centre (location TBC) |
| 3 Hotel, Town Centre (location TBC) | 5b Extra Care Scheme (location(s) TBC) | 8 Offshore Renewable Energy Catapult (OREC) Technology Innovation Centre (TIC) |
| 4 Welcoming and Safe Blyth (across town) | 5c Richard Stannard House Town Centre Living Scheme | 9 Northumberland Energy Park Infrastructure |

Project Pipeline

- 14** High Street Car Park and Thoroton St Improvements
- 15** Blyth Bus Station
- 16** Quay Road and Roundabout Improvements

- 10** Bridge Street Improvements (The Link)
- 11** Bowes St, Church St, and Wanley St Improvements (Northern Gateway Phase 1)
- 12** Regent Street Improvements (Northern Gateway Phase 2)
- 13** Beaside to Town Centre Walking and Cycling Route

Key Locations

- A** Keel Row Shopping Centre
- B** Keel Row Car Park
- C** NCC Land
- D** Gasometer Site
- E** Arriva Bus Depot
- F** Dun Cow Quay
- G** Blyth Hospital
- H** Morrisons Supermarket

Blyth Town Centre Boundary

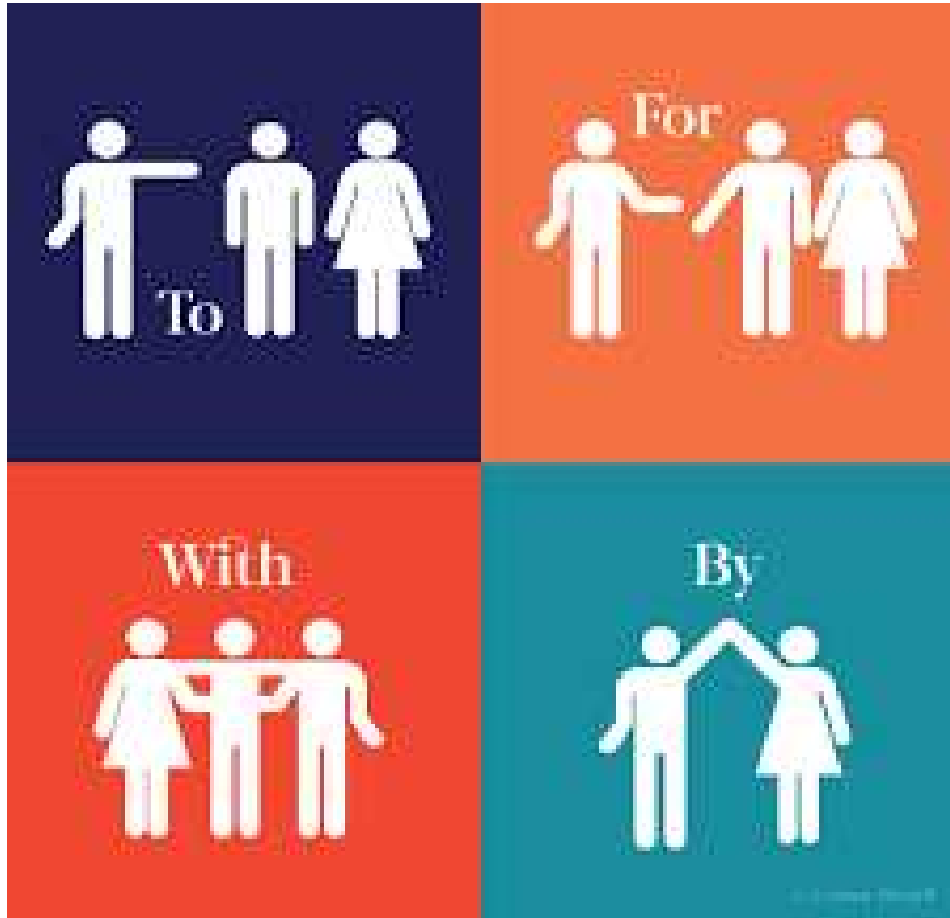
Energising Blyth – Delivery and Funding

			Project Development & Approvals		Project Completed			
			Project Delivery					
TIP Theme	Project/Package	UK Govt Funding Source	Summer 2023	Autumn 2023	Winter 2023	2024	2025	2026
Vibrant	1. Culture Venue & Market Place	Future High Streets Fund (FHSF)						
	2. Culture & Placemaking Programme	Town Deal (TD)						
	3. Hotel	FHSF						
	4. Welcoming and Safe Blyth	Levelling Up Deep Dive (LUDD)						
	5. Housing Renewal and Town Centre Living	LUDD						
Growing and Inclusive	6. Energy Central Campus (ECC) Phase 1 Learning Hub	TD / LUDD						
	7. ECC Phase 2 (Institute)	FHSF / TD						
	8. OREC Technology Development Centre	TD						
	9. Northumberland Energy Park Infrastructure	TD						
Connected	10. Bridge St Improvements	FHSF						
	11. Bowes St Improvements	Accelerated Town Deal (ATD)						
	12. Regent St Improvements	TD						
	13. Bebside to Town Centre Walking and Cycling Corridor	TD						

Engaging the community is at the of Energising Blyth



Using an asset-based approach that builds on the strengths in communities



What can communities do for themselves?

What might communities need some help with?

What can't communities do that agencies can?

Governance and Assurance – Updated May 2024

Energising Blyth Partnership Arrangements

Blyth Town Board

Business-led board comprising key stakeholder organisations (private, public, third sector) providing strategic direction for development and delivery of **Town Investment Plan** / regeneration projects

Community & Stakeholder Networks and Engagement

Public, community organisations, town centre & wider business community Includes Town Forum (with all County Cllrs, Town Council reps and other partners) and thematic groups e.g. Culture Advisory Group, Heart of Blyth Partnership, Blyth Better Together Partnership

Examples of Partners involved in Energising Blyth



Figure 80 - Logos of the Town Deal partners

NCC Accountable Body Function

NCC Cabinet

NCC Capital Strategy Group

NCC Housing Delivery Board (advisory re housing projects)

NCC Programme Board

Overall accountability for successful project delivery & risk management. Authorises required approvals & variation requests, agree Exec & Cabinet updates/decisions. Includes senior officers from all technical services and S151 Officer. Chair – Executive Director of Place and Regeneration

Department for Levelling Up, Housing and Communities

North of Tyne / North East Mayoral Combined Authorities

NCC Programme and Project Teams

Project & business case development, monitor performance, manage risks, project evaluation, co-ordinate governance, partnerships, communications and engagement. Co-ordinate delivery of assigned projects and commission/manage external resources

Advance Northumberland

Commissioned Project Management Services, Delivery Partner & Project Lead (See individual projects)

NCC Regeneration Funding Investment and Finance Teams

Manage funding agreements, alignment with NCC procedures, co-ordinate variation requests, budgets, claims and reporting, Commissioning/organising project appraisal, assurance oversight and support

Independent Appraisal

Town Board Membership and Governance Update

Culture Representatives

- Cultural Advisory Group being approached and will nominate two representatives

Health Representative

- Contact has been made with GP from Marine Medical Group to link in with the Public Care Network (PCN) in Blyth

Community Representatives

- Local community group/s will be contacted via Heart of Blyth to discuss nominating 2 representatives, including a Community Vice Chair

Small Business/Property Representatives

- FSB and NE Chamber of Commerce have been contacted
- May need development of business network in Blyth and for reps to emerge

North East Combined Authority

- Heather Orton – leads on housing, infrastructure and place

New County wide leisure provider

- Have been contacted

Police and Crime Commissioner

- Steven Hume, Director of Northumbria Violence Reduction Unit

Towards a new refreshed Town Plan – Long Term Plan for Towns Overview

- **Funding** – Up to £20m for Blyth over the next 10 years as a long term plan for towns - one of 55 towns across the UK. 75% capital / 25% revenue. Capacity funding to enable some early activity in 2024-25
- **Requirements:** Govt requires the submission of a Strategic Vision and 3 Year Investment Plan demonstrating need, impact, deliverability, VFM and engagement and input from the community and stakeholders to release the first 3 year allocation with further gateways linked to delivery progress to release further tranches.
- **Themes** of the new funding map well to the existing priorities of the Blyth Town Investment Plan as shown in the Table below – the funding aligns less closely with Growing Town however there may be linked or supporting initiatives related to this theme – also important to consider LTPFT in context of other key investment coming into the town e.g. NEMCA, Investment Zone and the existing EB programme:

Blyth Town Investment Plan Thematic Priorities	Long Term Plan for Towns Key Intervention Themes
Vibrant and Inclusive Town	Safety and Security, High Street, Heritage, and Regeneration
Connected Town	Transport and Connectivity

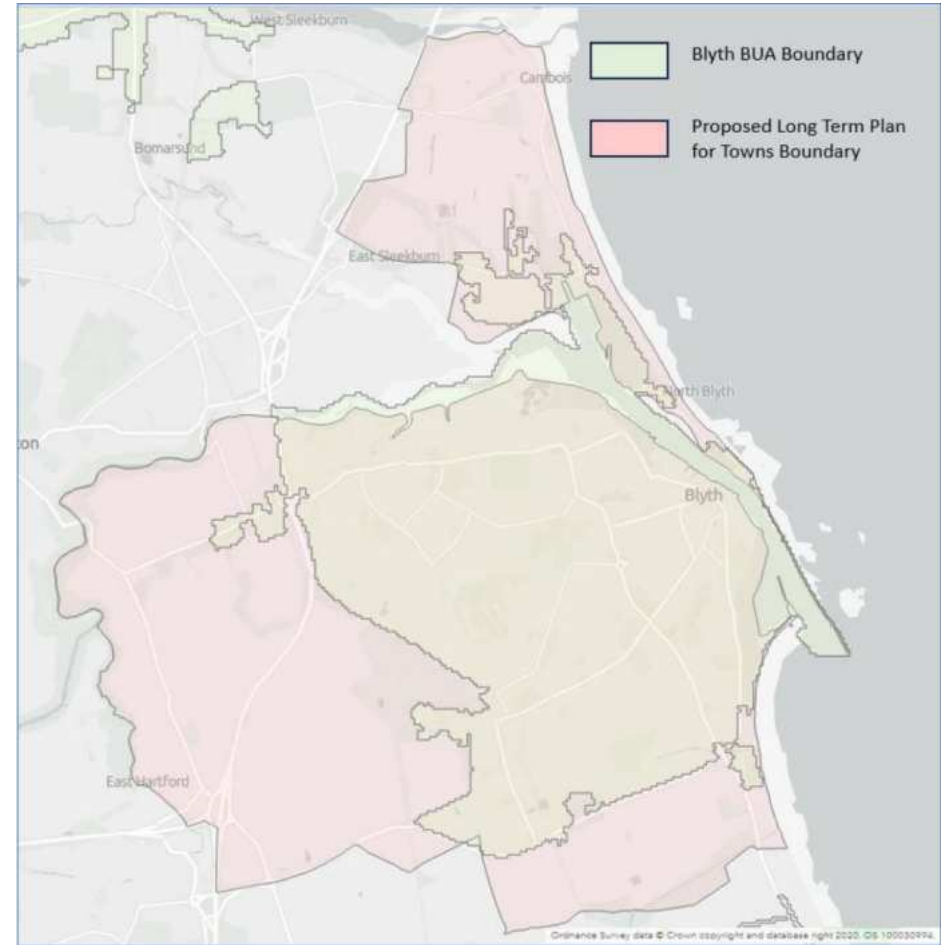
Capacity Funding

- £250k capacity funding now approved following governance return.
- Important to note that £200k of the above is drawn from the first years delivery funding for LTPFT in advance so is for ‘capacity’ and ‘delivery’ and reduces the first years allocation to be received once the bid is submitted
- Development and early delivery – Community Hub, **Community Celebrations**, Heart of Blyth
- **Feasibility and Development** support – Opportunity to identify project development support needs as part of engagement process

LTPFT Capacity Funds	2024-25 Allocations (RDEL)
Delivery Funding	£100k
Capacity Building	£100k
Programme Development including engagement and consultation	£50k
Total	£250k

Updated Town Investment Plan Map

- Consistent with original TIP Map
- Cover the established settlement boundary including key industrial, housing and town centre sites
- Cover the area of the new station being developed at Blyth Bebside
- Extend up to and around Cambois, North of the River Blyth, including NEP.
- **Cover culture, natural and tourism assets South of the Town e.g. Meggies Burn Nature Reserve and South Beach area.**
- Cover the full settlement of Blyth.
- TDB ultimately oversees overall investment and has noted it is unlikely that a significant proportion of LTPFT funds will be used in these outer areas – it just gives us the full flex to consider opportunities in the round



Evolving the Town Plan Vision

A key starting point in guiding this work is to ask what is the overall LTPFT pitch and narrative?

Propose it is about building on ongoing strategic physical and economic regeneration and investment in the town, to ensure benefits reach local people, communities, and businesses. This leads to three broad elements:

- **Local community-led:** Investing in the community, get funding out into the community (e.g. UKSPF-type approach). For example: culture; community; sport; health and wellbeing, safety etc.
- **Local business-led:** Opportunity to use LTPFT to lever in private investment to progress / complete the regeneration of the town (e.g. gap funding to stimulate business investment in properties; addressing crime and ASB in town centre; marketing the town).
- **Strategic place making and programming:** which complete or extend/embed universal elements of the towns overall offer – e.g. Town Centre Masterplan delivery and strategic cultural programming.

In combination this approach aims to extend and add value to the first phase of the Programme with an emphasis on working with business and communities to improve the whole town leveraging in other support

Bid development - Guiding principles

- **Refresh** of existing 10 Year Town Investment Plan based on **increasing the emphasis on enabling local community and business led action** Investment Plan will need to highlight 3 years of interventions with a view to longer term pipeline
- **3 month bid process** – strategy vision and investment plan development, project pipeline development, comms and engagement, approvals and submission
- **Build on the baseline of 5 years of engagement to date** and existing knowledge about intervention needs and project pipeline in the town - Engagement with a wider range of culture and community stakeholders at the core
- **Public engagement and consultation** on key intervention area focus and business reach out, Young People and resident workshops. Range of types and opportunities to get involved and only one step on this new part of the programme lots of ongoing engagement and input opps to come
- **Partnerships** - Series of Board touchpoints and active involvement in the process from key partnership groups
- **Realism / expectation management** – positive about up to £20m allocation whilst looking to 10 year timeline with a focus on 3 Year funding allocation in first instance

Bid development - programme design and enabling delivery

Blend of strategic activities and investing in communities with enabling funds and programmes

- **Programme Design** - Approach to funding different in the next stage – some direct strategic project development and delivery (e.g. place shaping and strategic culture programming) by NCC and more focus on enabling mechanisms to bring forward projects from the community, private and culture sector in the town e.g. grant funding programmes, community grants, community, cultural capital infrastructure funds, property gap funds
- **Co-production and development time** - Take a collaborative co-production approach to project identification for the investment plan but don't try to push project proposals through an artificial, hurried process to compete with one another
- **Blend of approaches** - Propose blend of 'strategic programmes' e.g. culture programme, place programme and new 'funding mechanisms' are included in the investment plan to allow projects to come forward for support when ready against criteria that match with the refreshed TIP and funds available – so for example recommend that a culture and community infrastructure fund is established which project sponsors in the town can then apply to when ready for capital support for schemes which meet the eligible LTPFT activities – likely to be at different scales of intervention and opportunity to bring in match.
- **Focus, Emphasis and additionality** – Based on inputs and feedback Town Board will need to carefully consider emphasis of investment in different themes considering £2m PA 75% cap / 25% rev split across thematic interventions prior to the submission to Govt in July once all inputs provided. Opportunity to lever in resources and consider other funders plans as part of this to consider where its best to intervene with this resource.

Communications and Engagement

Work to date:

- Evidence base from engagement and consultation the last 4 years as part of the existing EB programme
- LTPFT - TDB and partners workshop with the Towns Unit as part of a visit by Adam Hawksbee and 1:1s with some community stakeholders.
- Two special TDB meetings in March 2024 focused on establishing the new Town Board and capacity funding
- Welcoming and Safe Blyth Stakeholder workshops held including a range of partners involved in community and cultural initiatives in the town, with the purpose of scoping out potential community led and co-produced / created initiatives through LTPFT building on the existing Deep Dive funded pilot project.

Upcoming

- 10 Year Town Investment Plan Partnership Workshop – 23rd May half day at Blyth Football Club
- Outreach sessions with young people notionally at Silx and the Buffalo (TBC) – end of May
- Drop in 1 – Town Council Quayside Event – 1st June
- We will aim to do another 2 drop-in events across June
- Door knocking/business drop-ins – w/c 17th June
- Online survey – will run concurrently
- Late June / early July – Town Board meetings to review and then agree final version of Long-Term Plan



Opportunities: Clean Energy, Population Growth and Connectivity

A key opportunity area in Northumberland, the North East and UK Economy with a

235 Ha

2 million tonnes pa

ORE Catapult



235 Ha of strategic, quay-linked development sites with access to North Sea offshore wind projects.



Port of Blyth: Servicing energy sector with 2 million tonnes of cargo pa.



UK's leading technology, innovation and research centre for offshore energy.

National energy infrastructure location including North Sea Link UK/ Norway interconnector Project and National Grid assets.



Northumberland Energy Park: One of UK's largest employment sites with direct coastal access.



Northumberland Innovation Limited

Energy sector employment growth



11% Growth
In energy sector employment from 2015 to 2018

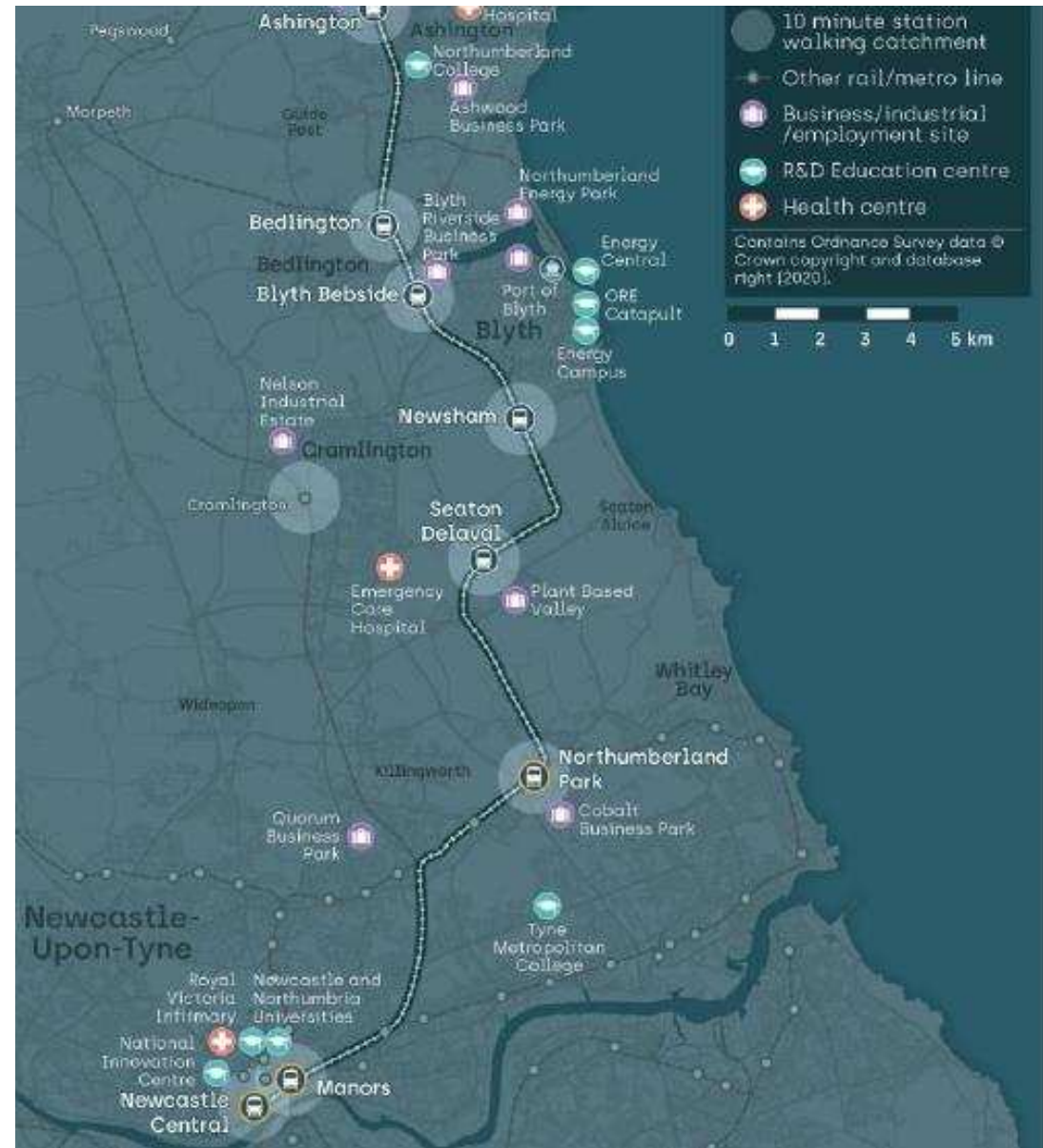
Growing commuter town due to housing developments and attractive coastal location



18%
Estimated population growth by 2031.

Also a growing younger population (0-15 age group)

Blyth - 4% Increase
Northumberland - 3% Decrease



Opportunities: Clean Energy Investment

- Northumberland Energy Park – NE Investment Zone location
- Major investment on site JDR Cable Systems (TFK) £130m investment and 170 new jobs
- £36m Site infrastructure including £1.43m Energising Blyth investment in Dock Apron
- Space for nationally significant clean energy Investment
- Hyperscale Datacentre Campus – multibillion investment agreed subject to contract with 100's jobs and £110m enabling fund from the investment for the wider economy



Images top left clockwise – NEP Phase 2/3 Site concept of new Hyperscale Data Centre Campus and Phase 1 JDR Cables Site Visualisations, Dock Apron completed works, JDR Cables factory build underway

Challenges:

Income, crime, deprivation, town centre decline, skills

Median annual income:

Blyth



£22,160

32% less than the national median income

Nationwide



£32,650

Change in market day town centre footfall:

Blyth

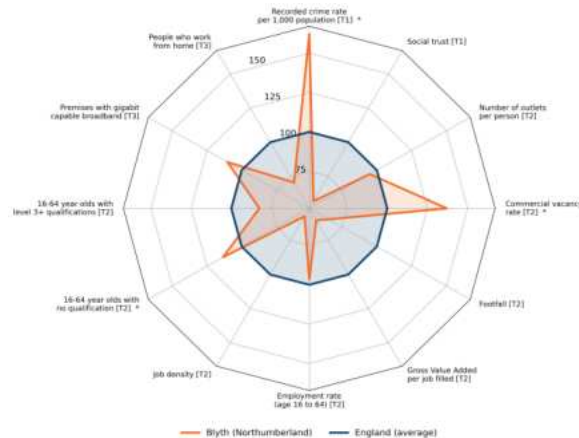


Winter 2019 216
Autumn 2020 101
Winter 2020 105

Nationwide



Average small town
110



6.9%



Unemployed

37%



economically inactive people on long-term sick

15%

unemployment in most deprived wards

Nationwide



4%



Unemployed

23%



economically inactive people on long-term sick

Opportunities: Community led change

Community led change already underway with much to build on – Heart of Blyth, Blyth Better Together, cleaner and greener community volunteering, network of community organisations/infrastructure and community led decision making, new projects in Energising Blyth e.g. empty homes team, housing renewal projects

Example: Heart of Blyth – a partnership project delivered by NCC supported by the Health Foundation and NCC has been successful over the last 3 years. The facilitator role is continuing to be supported by NCC but the projects pilot revenue funding comes to an end in Autumn 2024. There is an opportunity to build on learning to date through LTPFT as part of a wider package of interventions.

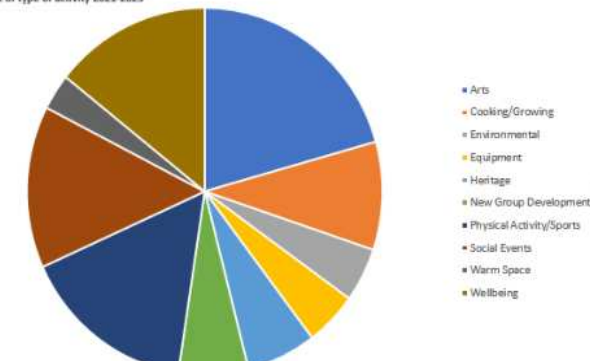
Agreed to provide 2024-25 micro grant continuation funding at March Board funded by LTPFT capacity and support for new Community Hub in TC.

Key Features:

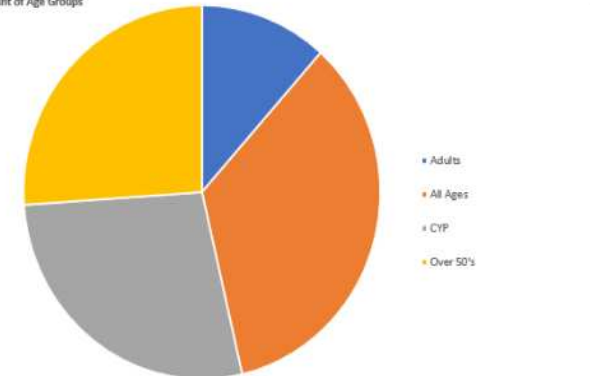
- Providing opportunities for residents/groups to come together.
- Residents Panel distributes an annual £75,000k microgrant fund.
- Has trained 20 individuals working in Blyth on Asset Based Community Development Approaches.
- Over the 18 months, the Residents Panel have agreed almost 50 microgrants totalling over £130,000.
- Over 70 organisations have been involved in the microgrants.
- Over 5000 residents from Blyth have benefitted from the activity funded by microgrants.
- The youngest person benefiting was aged 2 and the oldest 93.



Count of type of activity 2021-2023



Count of Age Groups



Opportunities – Community Safety and Tackling Crime

- Engagement and development work on 'Welcoming and Safe Blyth' indicates need to focus on measures that reduce perception and fear of crime adding value to the existing work of the police and other partners
- Blyth Better Together Partnership has a network building up of active partners to bring forward community level projects to tackle issues on the ground
- Some infrastructure measures may be helpful to design out crime e.g.lighting infrastructure, public realm, neighbourhood improvements etc also to boost pride in place
- CCTV has consistently been deprioritised as a measure by partners involved as it adds little value to policing and solving crime
- Neighbourhood / Retail Crime Partnership approaches where communities and business use common systems is a key measure and needs capital and revenue funds to succeed
- Propose merging the existing Welcoming and Safe Blyth project into a new initiative focused on this agenda – which may involve a grant fund for projects or may be delivered integrated with a wider community enabling fund across multiple themes
- The focus on intervention areas to be informed by engagement work to come particularly on this theme.



Opportunities: #Blyth2025 Culture Led transformation and celebration across Blyth

- Vibrant Cultural Sector across Blyth with a track record of hosting diverse events
- 2025 major year of delivery with launch of new Culture Venue, Market Place and Major Events and Public Art Programme 'Culture and Placemaking Programme' continuing into 2026
- Strong network of well established and new partners across town with opportunity to build on existing collaborations and specialisms e.g. BlythFest, Culture Map, Events Programmes
- #Blyth2025 Community Celebration Fund to be delivered using LTPFT capacity funding
- Pipeline of developing project proposals to improve culture and heritage led attractions and facilities across town – opportunity to plan, programme and deliver cumulative offer across multiple venues.
- Key Locations with potential to be improved as key assets and catalysts for the whole town e.g. Town Centre wrap around EB delivery to date, Blyth South Beach, Ridley Park, Quayside – with linkage to connectivity improvements
- Pipeline examples in this sector already identified in the EB pipeline include plans for Heritage and Culture led capital projects including the proposed commissioners building and heritage assets on the Quayside and Headways Artspace
- Opportunity to enable infrastructure and programming at multiple scales from community level small scale through to major capital schemes.



Opportunities: Total Place – Delivering the Blyth Town Centre Masterplan and capitalising on the towns key assets

- Town Centre redevelopment well underway with existing project pipeline to complete a ‘total place approach’
- Deliverable projects already worked up that will have universal benefit in the town centre e.g. High Street Car Park improvements scheme
- Link projects can be developed to improve ‘hot spots’ in and around the town centre – e.g. alleyways, areas with businesses located outside of primary shopping area etc
- Potential call out to explore with community where else capital interventions could be delivered in the longer term e.g. community locations on estates which could be given an uplift to develop a ‘community assets enhancement project’
- Potential for strategic assets masterplan to link South Beach, Ridley Park and Quayside together and to the Town Centre including Energy Campus and Heritage/Leisure assets
- Potential to match with other partners eg Great Northumberland Forest
- Unlikely to be a need to develop new Parks given the range of Parks in Blyth – however community gardens and green spaces at a smaller scale may be needed and improvements to existing assets too
- Measures to connect and improve access to parks linked to wider masterplanning could be a key measure



Define Long Term Plan for Towns building on TIP Core Themes

Stakeholder **Engagement** and Involvement

Identify and **Implement**

LTPFT Theme

Eligible Activities

Blyth Issue/Opportunity

Action

Outcomes for Blyth

High Streets, Heritage and Regeneration

The development, restoration or refurbishment of local natural, cultural and heritage assets and sites

Legacy of privately owned vacant, run-down properties in key locations – Refurbishment costs viability gap

Establish Commercial Property Fund - Work with landlords to facilitate refurbish g/f + Upper floors for retail/services/living/studios

Restoration and re-use of historic properties and improved urban environment
Increase commercial, residential, creative and community premises in TC
Leverage sustainable private investment in the town!

High Streets, Heritage and Regeneration

Support for outreach, engagement, participatory programmes as part of wider local arts, cultural, heritage and creative activities

Empower local people to help shape inclusive investment in their communities strengthening sense of pride, place and ownership

Establish Community + Cultural Investment Fund - Outreach through established networks and partnerships to identify interventions (activities, events, sport, health and wellbeing)

Community focused investments and benefits – building on Heart of Blyth
Increased and inclusive participation in events, activities, actions and interventions
Improved health and wellbeing, sense of pride and ownership in town

Define Long Term Plan for Towns building on TIP Core Themes

Stakeholder **Engagement** and Involvement

Identify and **Implement**

LTPFT Theme

Eligible Activities

Blyth Issue/Opportunity

Action

Outcomes for Blyth

Safety and Security

Promoting the active use of streets and public spaces throughout the daytime and evening streetlighting

Issues with Anti - Social Behaviour
Limited evening use of public areas

Support the establishment of Blyth Business Network and Town Centre Action Team
Facilitate networks and partnership working to identify interventions, actions and infrastructure

Business Network collaboration to tackle ASB
Greater animation and activity within the TC across the daytime and evening
'Natural Surveillance' and reporting of issues through events, activities, evening entertainment, TC living

Transport and Connectivity

Upgrading of existing foot paths and cycle paths, particularly in areas of health need or social inequalities
Traffic management improvements to relieve congestion and improved signage

Extend and compliment FHSF/Town Deal highways and connectivity works to reach new assets and areas to east, west and south of the town to better connect residents and access to the Quay/ Port

Package of strategic interventions incl key gateways and links between assets e.g. High Street Car Park, Bus Station, Keel Row Masterplan area.
Improved connections to Quayside and South Beach

Improved and branded wayfinding and infrastructure in and around the town
Improved connectivity to buses, car parking, taxis and train stations
Improved accessibility between key assets

Emerging Intervention Areas

Blyth Town Investment Plan Thematic Priorities	Long Term Plan for Towns Key Intervention Themes	Current Thinking – Intervention Packages
Vibrant and Inclusive Town	Safety and Security, High Street, Heritage, and Regeneration	<p>1. Community and Cultural Investment Fund (new ideas from local community would shape thinking on content of this programme culture; community; sport; health and wellbeing, safety, include small scale revenue activities, as well as capital investment in community and cultural / heritage facilities building on Heart of Blyth and other initiatives)</p> <p>2. Commercial Property Fund (to be informed by business and investor engagement) operating as a fund to encourage and enable private sector investment in vacant sites in the town centre to be brought back into positive use.</p> <p>3. Culture and Placemaking Phase 2 – longer term strategic programme of regular events, community celebrations and public art informed by Culture Sector in the town</p> <p>4. Blyth Business Network (including network development, collaboration on events and promotion, safety and security, tackling retail crime, business support – informed by early development of business networks in TC in 2024</p>
Connected Town	Transport and Connectivity	<p>5. Transport and Connectivity Package – package of strategic interventions inc key town centre gateways and links between assets e.g. High Street Car Park, Bus Station. Develop Quayside to South Beach Masterplan - phased delivery including wayfinding and infrastructure / offer improvements. Including a Town Centre Action Team – initiative to boost pride of place with a focus on the town centre – maintaining and managing the place based investment including a range of cleaner and greener activities</p>

Next Steps

- **Conversation and input** - Discussion today to shape the Bids focus and development from a multi sector perspective leading into May/June Engagement and Consultation with partners, residents, businesses and young people May/June
- **Capacity Fund** development and early delivery – Community Hub, Community Celebrations, Heart of Blyth – summer/ autumn 2024 prep for launch
- **Bid Development** - strategy and investment plan drafting and evidence gathering, project pipeline development informed by above events and input
- **Late June / Early July** – 2 TDB Sessions to review draft Town Plan including vision and draft investment plan including focus of investment plan resources considering strategic fit, need, additionality and deliverability and then agree the submission alongside NCC Cabinet approval as accountable body
- **Submission** - Mid July – target for submission (1st August Deadline)
- **Approval** - Autumn – Bid Approval and Programme Establishment
- **Programme establishment and launch** - Winter 2024 onwards Programme Launch and moving to delivery including programme enabling funds available to applicants and early project delivery.
- **Existing Programme** – continued milestones related to existing programme delivery e.g. Energy Campus opening Autumn 2024, Culture Venue and Market Place Summer 2025 etc

Thanks for Listening – Moving into workshops



LTPFT intervention themes annex

LTPFT Eligible Activities – Safety and Security

(Recommended Blyth focus in BOLD)

Intervention Areas	
<ul style="list-style-type: none"> • Promoting the active use of streets and public spaces throughout the daytime and evening • Improvements to streetlighting • Installation of new CCTV • Hotspot policing • Problem-oriented policing • Sports programmes designed to prevent crime and reduce reoffending • Mentoring • Police-led pre-charge diversion models for young offenders 	<ul style="list-style-type: none"> • Focused deterrence strategies • Halfway house programmes • Neighbourhood Watch • Provision of crime prevention advice • Property marking • Target hardening (increasing the security of a property) • Cocoon watch (provision of crime prevention advice, support and guidance to neighbours and surrounding addresses of burgled properties) • Alley gating

LTPFT Eligible Activities – High Streets, Heritage and Regeneration (Recommended Blyth focus in BOLD)

Interventions

- **Regenerating a town square or high street**
- **Public realm improvements, for example street furniture or other decorative improvements**
- **The delivery of outreach, engagement and participatory programmes for community spaces, including youth centres and public libraries**
- Building new or updating existing defences to increase communities' resilience to natural hazards like flooding or coastal erosion
- Development of a new park, particularly in areas with the least access to greenspace
- **Development of a new park or community garden**
- Improvements to a canal towpath, particularly in more deprived neighbourhoods
- **Urban or riparian tree planting**
- **Changes to management of green spaces and verges**
- **Regeneration of existing parks or community gardens, particularly in areas with poor quality parks and gardens**
- **Improving access to existing parks**

LTPFT Eligible Activities – High Streets, Heritage and Regeneration (Recommended Blyth focus in BOLD)

- | | |
|---|---|
| <ul style="list-style-type: none">• The delivery of events programmes for community spaces, including youth centres and public libraries• The development, restoration or refurbishment of local natural, cultural and heritage assets and sites• Funding for maker spaces• Funding for local art galleries, museums, libraries for exhibitions• Support for displays for artists to showcase work• Locally led music and theatre performances, tours, author events and film screenings | <ul style="list-style-type: none">• Funding for cultural, heritage and creative events• Support for outreach, engagement, participatory programmes as part of wider local arts, cultural, heritage and creative activities• Support for the establishment and development of cultural, heritage collaborative networks to share knowledge locally• Campaigns promoting the local area and its culture, heritage, leisure and visitor offer to residents and visitors• Campaigns to encourage visitors from further afield to visit and stay in the region, collaborating with other places where appropriate |
|---|---|

LTPFT Eligible Activities – High Streets, Heritage and Regeneration (Recommended Blyth focus in BOLD)

Funding for local volunteering groups, such as youth charities and carer's groups

Support for people to develop volunteering and social action projects locally

Renovation and maintenance of existing sports facilities

Support for community sports leagues

Regeneration of an unused area to build sports facilities

Creation of new 3G sports pitches and other sports facilities

Funding for community spaces, such as village halls, libraries or community centres for local civil society and community groups to use

Support for people to develop volunteering and social action projects locally

Funding to support the establishment and ongoing running of a new open air market

Business support activity for entrepreneurs

Development of local visitor trails and tours

Grants for the development, promotion and upkeep of local tourist attractions

Development of other local visitor experiences based around the local offer

Grants to bid for, secure and hold a conference for a leading sector locally

LTPFT Eligible Activities – Transport and Connectivity (Recommended Blyth focus in BOLD)

- **Creation of new foot paths and cycle paths, particularly in areas of health need or social inequalities**
- **Upgrading of existing foot paths and cycle paths, particularly in areas of health need or social inequalities**
- **Traffic signalling improvements**
- Bus lanes and corridors
- **Improved passenger information**

- **Traffic management improvements to relieve congestion**
- **Road safety**
- Highway maintenance (including potholes)
- Adding stations along existing lines
- **Improved accessibility and journey quality at and around stations**
- **Improved passenger information**
- **EV charging facilities**
- Procuring zero emission buses